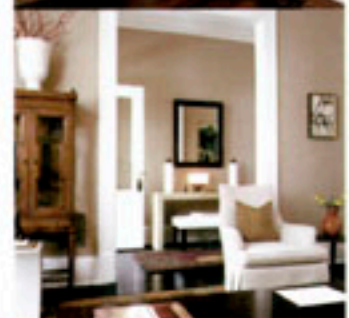




INSPIRED HIGH-END
INTERIOR DESIGN

SHANE REILLY



Schiffer



SCOTT SANDERS L.L.C.

Scott Sanders aspired to create "The Great American TV Room." Unlike so many basement media rooms, which are cold, dark, and rarely used, Sanders wanted this room to be an often-used, fabulous television game room. Sanders' design inspiration came from some multi-colored Saccho runners which he had sewn together to make a full rug. He was drawn to the colors, which carried a 1970s color palette of avocado green, chocolate brown, cherry red, and yellow – perfect to create a "vintage '70s family room with a modern twist."

From there, Sanders added comfortable, chocolate brown leather sofas. He painted the walls a happy yellow so that "you wouldn't know you were in the basement." Using what he calls "the high-low method," he mixed a variety of furniture, fit for a kid-friendly, high-end family room. The pieces included Ralph Lauren club chairs, and Holly Hunt coffee tables, mixed with Crate & Barrel Windsor chairs he transformed by lacquering them. For accessories, he transformed vintage TV Guides, TV-themed lunch boxes, and blueprints from popular sitcom houses into artwork by displaying them in frames and shadow boxes.

Sanders' design is high-end because "everything is pulled together." He added so many elegant and unexpected details for a basement room, such as full drapery, sconces, throw pillows, wall-to-wall sea grass under the area rugs, and more. That the depth of the design is very apparent. "I went all the way," he said.

Photography by Pat Miller

THREE:
PERSONALITY OF CONCEPT

