

SPECIAL ISSUE

House Beautiful

SEPTEMBER 2004

DECORATING WITH

COLOR

THE HOTTEST COLORS
IN PAINTS, FABRICS, ACCESSORIES
& HOW TO USE THEM

COOL ROOMS FOR EVERY STYLE
PLUS BARBARA BARRY'S
SENSATIONAL NEW FABRICS



Makeover

WRITER: JILL KIRCHNER SIMPSON PHOTOGRAPHER: MARCO RICCA PRODUCER: DORETTA SPERDUTO

Out of the Blue

A simple change of color created a whole new look for designer Scott Sanders

AFTER



SOMETIMES ONE small adjustment can lead to a transformation. New York designer Scott Sanders had been living in his one bedroom apartment in the West Village for ten years when he decided he wanted a change. Always color-directed in his work, he took inspiration for his new scheme from the French blue of his Smythson of Bond Street stationery. When he found its match in Pratt & Lambert's Paradise Lost, everything clicked. His collection of blue-and-white Chinese export porcelain came to the fore and expanded; he re-covered his sofa in rich Ralph Lauren periwinkle Ultrasuede, and recast his bed as a rhapsody in blue. To keep the blue and white from becoming too beachy, he re-covered his chairs in Ralph Lauren's black Motorcycle leather. Crisp stripes, touches of geometric pattern, and contemporary art kept the look modern. >

A BIT OF SPARKLE



Chandeliers aren't just for the dining room: Sanders chose "the most masculine antique chandelier I could find" at ABC Carpet & Home to add a bit of sparkle to the living room. "Particularly at night, it gives the room a warm glow," he says. Other bright ideas:

1. Currey & Company's Laureate four-arm gold chandelier drips with crystals, \$730.
2. This regal five-arm chandelier from Maura Daniel has an antique silver finish and crystal beaded swags, \$750.
3. Vaughan's gold leaf and crystal chandelier has a curvaceous, airy leaf motif, \$1,478.

824		
1212	Paradise Lost Paradise Perle	\$1
1213	Delaney's Lady Blanc de Sable	\$1
1200	Daydream Riviera	\$1
1202D	More Blue White Blue	\$W
1249D	Commas Commas	\$W

PRATT & LAMBERT

BEFORE



HB HINTS

GO WITH A FLOW In a small home, choosing a single colorway helps expand the sense of space and create flow from room to room. Sanders chose a slightly lighter blue for the bedroom, and a complementary stripe for the kitchen wallpaper.

LOOKING UP Painting the crown moldings (these were of uneven, poor quality) the same blue as the walls has the visual effect of raising the ceiling height. Using a cooler shade—blue, rather than the warm red, also made the room feel larger.

COOLING DOWN To offset the intensity of a strong color, choose a light rug, like the flokati in the living room (and the seagrass in the bedroom), and add lots of white in trim and elements like picture mats.

For continuity, Sanders chose blues that are just a rung away from each other on the color ladder: Pratt & Lambert's Paradise Lost for the living room and hall, and Daydream for the bedroom.

Makeover



"Group collections together in specific areas," advises Scott Sanders (right), next to a group of Russian lacquer boxes.



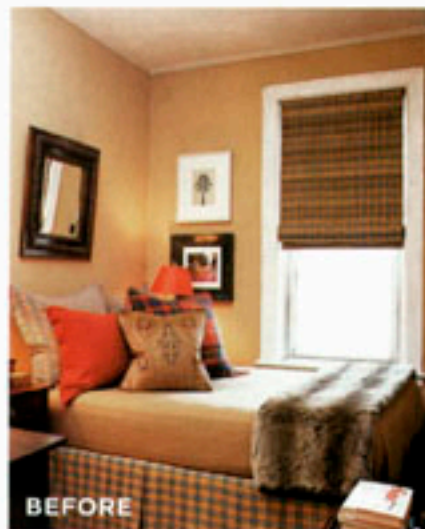
Because the alcove kitchen opens onto the living area, Sanders extended the blue and white theme with his Spode Italianate dishes, Chinese porcelain, and cobalt glassware from Pier One displayed on open shelves.

To give the bedroom its own identity, Sanders added touches of red, from the plaid pillow retained from his former scheme, to a picture frame, to crisp red binding on the seagrass rug.

To make the most of the diminutive space, Sanders sacrificed a headboard, but added luxury with layers of pillows and a fox throw. Swing-arm lamps are also classic space-savers.



TEA TIME Reproduction tea canisters from Mottahedeh, \$185 and \$950, are Chinese export porcelain—characterized by scenes of teahouses, meandering streams, distant mountains, and a general rustic appearance.



BEFORE



AFTER



ACCENTS Scott Sanders keeps antique furnishings, classic colors, and patterns fresh by mixing in modern elements, such as black and white photography, a flokati rug, and a rich mélange of pillows like the Jonathan Adler "Nixon" pillow on the bed, above right. Other options: 1. The Dots silk pillow by Thomas Paul, available at Shelter L.A., \$60. 2. Procession in blueberry and sand from Judy Ross Textiles, \$180. 3. Rugby Stripe from the Andrew Morgan Collection, \$165. For more details, see Resources.